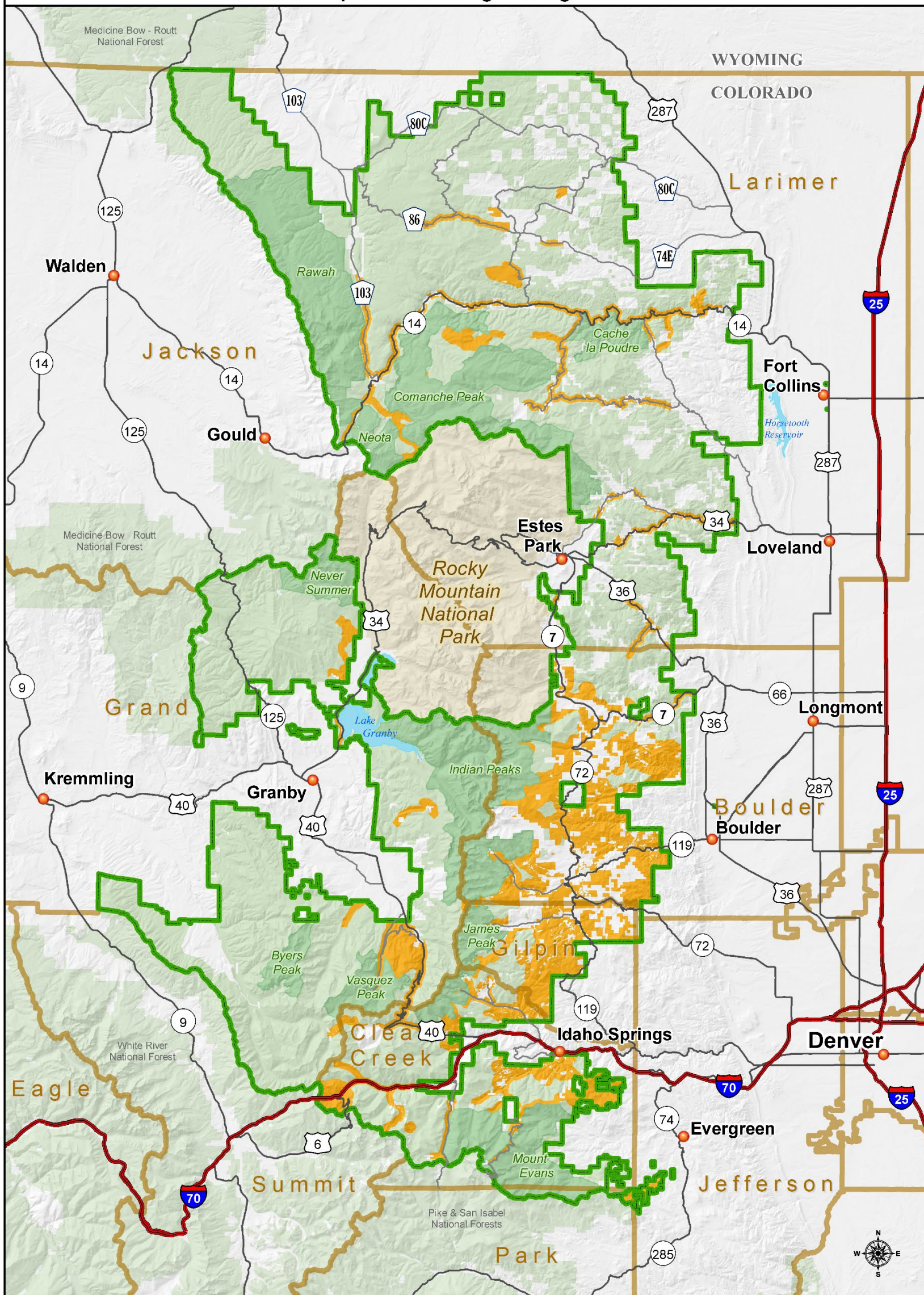




Arapaho and Roosevelt National Forests Recreational Sport Shooting Management - Final Decision



Legend

- Administrative Forest Boundary
- National Forest System Lands
- Non-Federal Lands
- Unsuitable for Recreational Sport Shooting
- County Line
- Wilderness
- Rocky Mountain National Park
- Interstate
- Major Roads

Disclaimer:
This map is for display purposes only and not for navigation. This product is reproduced from geospatial information prepared by the U.S. Department of Agriculture, Forest Service. GIS data and product accuracy may vary. Using GIS products for purposes other than those for which they were created may yield inaccurate or misleading results. The Forest Service reserves the right to correct, update, modify, or replace GIS products based on new inventories, new or revised information, and if necessary in conjunction with other federal, state or local public agencies or the public in general as required by policy or regulation. Previous recipients of the products may not be notified unless required by policy or regulation. For more information, contact: Arapaho/Roosevelt National Forest Supervisors Office: 970-295-6600

0 2.5 5 10 Miles

Date: 2/28/2019